



Laboratory Equipment



Specialist in heat, cold and movement

Features

- Temperature controlled by microprocessor:
 - with integrated high precision Pt100 sensor.
 - with digital electrical regulation.
- Inner tank made of stainless steel AISI 304 or Plexiglass.
- Metallic housing protected with Epoxi of great resistance to aggressive surroundings.
- Digital display LCD backlighted showing the selected and actual temperature.
- Membrane push-button control.
- Circulations pump (6 l/min and max. pressure 200 mbar).
- Double safety thermostat:
 - The unit will cut out if there is insufficient liquid or if the temperature exceeds the maximum temperature.
 - Safety automatic disconnection with acoustic alarm that prevents overheating from the programmed temperature.
- Indication on the display or high temperature on the tank, that provides protection against burn.
- Automatic restart after unexpected shut down keeping the same parameters as before the incident. And incident sign appears on the display.

BATH ULTRA

RECIRCULATING BATH WITH DIGITAL IMMERSION THERMOSTAT

Max. Vol. (l)	12
T. range (°C)	Amb.T.+5 to 100 Amb.T.+5 to 200
Resolution (°C)	0,1
Voltage	100v, 110v or 220v / 50 or 60 Hz
References	+100°C Ref:10000-01138 +200°C Ref:10000-01115



BATH OVAN THERM H

BATH WITH DIGITAL IMMERSION THERMOSTAT

Max. Vol. (l)	12, 20, 27 or 45
T. range (°C)	Amb.T.+5 to 100 Amb.T.+5 to 200
Resolution (°C)	0,1
Voltage	100v, 110v or 220v / 50 or 60 Hz
References	100°C 12L Ref:10000-01140 20L Ref:10000-01141 27L Ref:10000-01142 45L Ref:10000-01143 200°C 12L Ref:10000-01144 20L Ref:10000-01145 27L Ref:10000-01113 45L Ref:10000-01146



BATH OVAN THERM H CLEAR

TRANSPARENT BATH WITH DIGITAL IMMERSION THERMOSTAT

Max. Vol. (l)	8, 12, 20 or 27
T. range (°C)	Amb.T.+5 to 60
Resolution (°C)	0,1
Voltage	100v, 110v or 220v / 50 or 60 Hz
References	8L Ref:10000-01151 12L Ref:10000-01152 20L Ref:10000-01153 27L Ref:10000-01154



BATH D

DIGITAL THERMOSTATIZED BATH

Max. Vol. (l)	12
T. range (°C)	Amb.T.+5 to 100 Amb.T.+5 to 200
Resolution (°C)	0,1
Voltage	100v, 110v or 220v / 50 or 60 Hz
References	100°C 5L Ref:10000-01109 12L Ref:10000-01110 20L Ref:10000-01111 45L Ref:10000-01112 200°C 5L Ref:10000-01120 12L Ref:10000-01121 20L Ref:10000-01122 45L Ref:10000-01123



BATH

ANALOG THERMOSTATIZED BATH

Max. Vol. (l)	5, 12, 20 or 45
T. range (°C)	Amb.T.+5 to 120 Amb.T.+5 to 210
Resolution (°C)	+ - 1
Voltage	100v, 110v or 220v / 50 or 60 Hz
References	120°C 5L Ref:10000-01101 12L Ref:10000-01102 20L Ref:10000-01103 45L Ref:10000-01104 210°C 5L Ref:10000-01105 12L Ref:10000-01106 20L Ref:10000-01107 45L Ref:10000-01108



Features

- Temperature controlled by microprocessor with integrated high precision Pt100 sensor and ARA V2 algorithm of temperature regulation.
- Inner tank made of stainless steel AISI 304.
- Temperature adjustable at the immersion thermostat, and stirring speed adjustable for each place individually.
- Metallic housing protected with Epoxi of great resistance to aggressive surroundings.
- Digital display LCD backlighted showing the selected and actual temperature.
- Circulations pump (6 l/min and max. pressure 200 mbar).
- Membrane push-button control
- Double safety thermostat:
 - The unit will cut out if there is insufficient liquid or if the temperature exceeds the maximum temperature.
 - Safety automatic disconnection with acoustic alarm that prevents overheating from the programmed temperature.
- Indication on the display or high temperature on the tank, that provides protection against burn.
- Automatic restart after unexpected shut down keeping the same parameters as before the incident. And incident sign appears on the display.

BATH OVAN THERM MULTI MIX

BATH WITH DIGITAL IMMERSION THERMOSTAT AND MULTIPLACE MAGNETIC STIRRER

Max. Vol. (l)	20 (N. places: 5 or 9)
T. range (°C)	Amb.T.+5 to 100
Speed range (rpm)	200-1200
Resolution	0,1°C / 100 rpm
Voltage	100v, 110v or 220v / 50 or 60 Hz
References	5 places Ref:10000-01130 9 places Ref:10000-01128



BATH SHAKER

DIGITAL THERMOSTATED BATH WITH HORIZONTAL SHAKING

Max. Vol. (l)	27 or 45
T. range (°C)	Amb.T.+5 to 100
Resolution	0,1°C / 5 rpm
Speed range (rpm)	10-100
Amplitude (mm)	40
Voltage	100v, 110v or 220v / 50 or 60 Hz
References	27L Ref:10000-01114 45L Ref:10000-01132



ORBITAL BATH SHAKER

DIGITAL ORBITAL SHAKER

T. range (°C)	Amb.T.+5 to 100
Max. load (kg)	25
Speed range (rpm)	50 - 100
Amplitude (mm)	30
Resolution	0,1°C / 5 rpm
Reference	Ref:30000-00161



Accessories

Constant liquid level*	20000-00111	Order together with the bath. It has to be mounted in the factory.	
Thermometer and support	20000-00120	Max. T 100°C	
Cover with disc adapters	20000-00100	For baths of 5 l.	
	20000-00101	For baths of 12 l.	
	20000-00102	For baths of 20l. or 2 units for baths of 45 l.	
Set of disc adapters	20000-00189		
Cover of stainless steel	20000-00105	For baths of 5 l.	
	20000-00106	For baths of 12 l.	
	20000-00107	For baths of 20 l.	
	20000-00108	For baths of 45 l.	
Support for tube racks	20000-00161	For baths of 5 l.	
	20000-00162	For baths of 12 l.	
	20000-00163	For baths of 20l. or 2 units for baths of 45 l.	
Tube racks	20000-00164	For 36 tubes ø13mm	
	20000-00165	For 24 tubes ø16mm	
	20000-00166	For 24 tubes ø20mm	

Bath capacity: 5l: 1 rack; 12l: 3 racks; 20 l: 5 racks; 45 l: 2x5 racks

Features

- Temperature controlled by microprocessor with internal Pt100 sensor and ARA V2 algorithm of temperature regulation.
- Digital display LCD backlighted showing the selected and actual temperature.
- Membrane push-button control.
- Indication on the display of high temperature on the tank, that provides protection against burn.
- Heating resistance distributed homogeneously for a uniform heating of the whole contact sur.
- Wide range of interchangeable blocks.
- Automatic restart after unexpected shut down keeping the same parameters as before the incident. An incident sign appears on the display.

BATH DRY BLOCK
DIGITAL BATH DRI BLOCK

N° of blocks	1 or 2
T. range (°C)	Amb.T.+5 to 200
Homogeneity (°C)	+/- 2%
Resolution (°C)	0,1
Voltage	100v, 110v or 220v / 50 or 60 Hz
References	1 block Ref:10000-01117 2 blocks Ref:10000-01118



BD200-CE + aluminium block



BD200-RE + 2 aluminium block

SAND BATH
DIGITAL SAND BATH

T. range (°C)	Amb.T.+5 to 400
Timer (min)	0-120
Resolution (°C)	0,1
Voltage	100v, 110v or 220v / 50 or 60 Hz
Reference	Ref:10000-01119



SB400E

Accessories

Aluminium round blocks of ø105mm for 10000-01117	20000-00112	For 34 tubes of ø6mm.
	20000-00113	For 18 Eppendorf tubes 1,5 ml and ø11mm.
	20000-00147	For 20 Eppendorf tubes 0,5 ml and ø8mm.
	20000-00114	For 24 tubes of ø12mm.
	20000-00115	For 18 tubes of ø16mm.
	20000-00116	For 8 tubes of ø20mm.
	20000-00117	For 6 tubes of ø25mm.
Aluminium square blocks of 75 x 95mm for 10000-01118	20000-00174	For 20 Eppendorf tubes 1,5 ml and ø 11 mm.
	20000-00190	For 20 Eppendorf tubes 0,5 ml and ø 8mm.
	20000-00175	For 30 tubes of ø6mm.
	20000-00176	For 20 tubes of ø12mm.
	20000-00177	For 12 tubes of ø16mm.
	20000-00178	For 8 tubes of ø20mm.
	20000-00179	For 6 tubes of ø25mm.
	20000-00180	For 15 cuvettes 12,5 x 12,5 with mobile channels.
	20000-00181	For 1 microtiter plate 96
	20000-00182	For 1 microtiter plate 384



Features

- Temperature controlled by microprocessor, with electronic digital regulation.
- Aluminium block with 6 or 9 cavities, specially designed for the edible oil taste (standard No.: L.248/67).
- Inner tank of stainless steel AISI 304 and metallic housing protected with Epoxi of great resistance to aggressive surroundings.
- Digital display LCD backlighted showing the selected and actual temperature, and timer.
- Membrane push-button control.

- Heating resistance of special alloy of stainless steel, heat and corrosion resistance.
- Safety thermostat cut out indicator lamp. The unit will cut out if there is insufficient liquid or if the temperature exceeds the maximum temperature. DIN 12877 class 2.
- Indication on the display of high temperature on the tank, that provides protection against burns.
- Automatic restart after unexpected shut down keeping the same parameters as before the incident. An incident sign appears on the display.

BATH FOR OIL TASTE

THERMOSTATIZED DIGITAL BATH FOR OIL TASTE

N° of cavities	6 or 9
T. range (°C)	Amb.T.+5 to 110
Resolution (°C)	0,1
Voltage	100v, 110v or 220v / 50 or 60 Hz
References	6 places Ref:10000-01133 9 places Ref:10000-01135



REFRIGERATED BATHS

Features

- Temperature controlled by microprocessor, with integrated high precision Pt100 sensor, and ARA V2 algorithm of temperature regulation with "fuzzy logic" control.
- Inner tank made of stainless steel AISI 304, and metallic housing protected with an Epoxi paint of great resistance to corrosion.
- Digital display LCD backlighted with indication of the selected and real value of temperature.
- Membrane push-button control.
- CFC free compressor of 1/5 HP, noiseless and without vibration.

- Circulation pump (6 l/min) (max. pressure 200 mbar).
- External faucets for ex thermostatisation.
- Safety thermostat cut out indicator lamp. The unit will cut out if there is insufficient liquid or if the temperature exceeds the maximum temperature.
- Automatic restart after unexpected shut down keeping the same parameters as before the incident. An incident sign appears on the display.

BATH CRYOSTAT

REFRIGERATED DIGITAL RECIRCULATING BATH

Max. Vol. (l)	12
T. range (°C)	-10 to +100
Resolution (°C)	0,1
Voltage	100v, 110v or 220v / 50 or 60 Hz
Reference	Ref:10000-01116



BATH OVAN THERM C

BATH WITH DIGITAL REFRIGERATED IMMERSION THERMOSTAT

Max. Vol. (l)	12, 20, 27 or 45
T. range (°C)	-10 to +100
Resolution (°C)	0,1
Voltage	100v, 110v or 220v / 50 or 60 Hz
References	12L Ref:10000-01147 20L Ref:10000-01148 27L Ref:10000-01149 45L Ref:10000-01150



BATH SHAKER C

REFRIGERATED DIGITAL BATH WITH HORIZONTAL SHAKING

Max. Vol. (l)	27
T. range (°C)	-10 to +100
Resolution	0,1°C / 5rpm
Speed range (rpm)	10 to 100
Amplitude (mm)	40
Voltage	100v, 110v or 220v / 50 or 60 Hz
Reference	Ref:10000-01136

Features

- Temperature controlled by microprocessor with integrated high precision Pt100 sensor and ARA V2 algorithm of temperature regulation.
- Digital display LCD backlighted showing the selected and actual temperature
- Membrane push-button control
- Pump for homogenization(6 l/min and max. pressure 200 mbar)
- CFC free compressor of 1/5 CV, noiseless and without vibration
- Thermostatization at maximum temperature of maximum 12 l.
- Safety thermostat cut out indicator lamp. The unit will cut out if there is insufficient liquid or if the temperature exceeds the maximum temperature.
- Automatic restart after unexpected shut down keeping the same parameters as before the incident. An incident sign appears on the display
- Minimum high of the tank: 14 cm

OVAN THERM H
DIGITAL IMMERSION THERMOSTAT

Max. Vol. (l)	20
T. range (°C)	Amb.T.+5 to 100 Amb.T.+5 to 200
Resolution (°C)	0,1
Voltage	100v, 110v or 220v / 50 or 60 Hz
References	+100°C Ref:10000-01137 +200°C Ref:10000-01100



OVAN THERM C
DIGITAL REFRIGERATED IMMERSION THERMOSTAT

Max. Vol. (l)	12, 20, 27 or 45
T. range (°C)	0 to +100
Resolution (°C)	0,1
Voltage	100v, 110v or 220v / 50 or 60 Hz
Reference	Ref:10000-01129



FLOCCULATORS

Features

- Digital flocculator for water analysis of 6 or 4 places.
- Speed controlled by microprocessor.
- Smooth and progressive start and stop.
- Digital display LCD backlighted indicating the selected and actual speed and timer (audible alarm).
- Membrane push-button control.
- Memory for 2 different speed values, changing between each one just with one click.
- Stainless steel stirring rods of Ø6mm with adjustable height.
- Backlight screen that could be placed in 2 positions: lower or rear, without dismantling.
- Suitable for long vessels of 1 l.
- Handles for easy transport.
- Quiet operation, suitable for continuous running.
- LED illumination.

JAR TEST
DIGITAL FLOCCULATOR

N° places	4 or 6
Speed range (rpm)	20-250
Timer (min)	0-240
Resolution (rpm)	5
Voltage	100v, 110v or 220v / 50 or 60 Hz
References	4 places Ref:10000-01016 6 places Ref:10000-01017



JAR TEST P
DIGITAL PORTABLE FLOCCULATOR

N° places	4
Speed range (rpm)	20-250
Timer (min)	0-240
Resolution (rpm)	5
Voltage	100v, 110v or 220v / 50 or 60 Hz
Reference	Ref:10000-00097

*It comes with cable car charger



INCUBATORS THERMOSTATIZED

(Standard voltage 220V, request for different)

Features

- Incubator made of Inox and Plexiglas.
- Temperature controlled by microprocessor with integrated high precision Pt100 sensor and ARA V2 algorithm of temperature regulation.
- Digital display LCD backlighted with indication of the selected and real value of the temperature, and timer (with audible alarm).
- Membrane push-button control.
- With forced air circulation.
- Security system that protect against over-temperature.
- Optional: external T sensor for control the temperature of the sample in its proximity.
- Can be adapted to our orbital and horizontal shakers (models Orbital Midi, Orbital Maxi or Horizontal Maxi).
- Automatic restart after unexpected shut down, keeping the same parameters as before the incident. An incident sign appears on the display.

INCUBATOR OPAQ

DIGITAL INCUBATOR OPAQUE

Max. Vol. (l)	125
T. range (°C)	Amb.T. to 60
Timer (min)	0-240
Resolution (°C)	0,1
Voltage	100v, 110v or 220v / 50 or 60 Hz
References	Ref:10000-01031
Available Kits	Ref:10000-01084 Incubator Opaq + Orbital Maxi (without accessory) Ref:10000-01056 Incubator Opaq + Adapter for shakers



INCUBATOR CLEAR

DIGITAL INCUBATOR TRANSPARENT

Max. Vol. (l)	122
T. range (°C)	10-60
Timer (min)	0-240
Resolution (°C)	0,1
Voltage	100v, 110v or 220v / 50 or 60 Hz
References	Ref:10000-01057
Available Kits	Ref:10000-01085 Incubator Opaq + Orbital Maxi (without accessory) Ref:10000-01058 Incubator Opaq + Adapter for shakers



INCUBATORS REFRIGERATED

(Standard voltage 220V, request for different)

Features

- Incubator made of Inox and Plexiglas.
- Temperature controlled by microprocessor with integrated high precision Pt100 sensor and ARA V2 algorithm of temperature regulation.
- Digital display LCD backlighted with indication of the selected and real value of the temperature, and timer (with audible alarm).
- Membrane push-button control.
- With forced air circulation.
- Quiet refrigeration thanks to the against over-temperature.
- Security system that protect against over-temperature.
- Optional: external T sensor for control the temperature of the sample in its proximity.
- Can be adapted to our orbital and horizontal shakers (models Orbital Midi, Orbital Maxi or Horizontal Maxi).
- Automatic restart after unexpected shut down, keeping the same parameters as before the incident. An incident sign appears on the display.

INCUBATOR OPAQ C

DIGITAL REFRIGERATED INCUBATOR OPAQUE

Max. Vol. (l)	200
T. range (°C)	10-60
Timer (min)	0-240
Resolution (°C)	0,1
Voltage	100v, 110v or 220v / 50 or 60 Hz
References	Ref:10000-01068
Available Kits (Incubator + Shaker or Adapter)	Ref:10000-01087 Incubator Opaq + Orbital Maxi (without accessory) Ref:10000-01069 Incubator Opaq + Adapter for shakers



INCUBATOR CLEAR C

DIGITAL REFRIGERATED INCUBATOR TRANSPARENT

Max. Vol. (l)	200
T. range (°C)	10-60
Timer (min)	0-240
Resolution (°C)	0,1
Voltage	100v, 110v or 220v / 50 or 60 Hz
References	Ref:10000-01089
Available Kits (Incubator + Shaker or Adapter)	Ref:10000-01088 Incubator Clear + Orbital Maxi (without accessory) Ref:10000-01067 Incubator Clear + Adapter for shakers



INCUMOV

T. range (°C)	Amb.T. to 60
Speed range (rpm)	10 - 40
Resolution	0,1°C / 2 rpm
Reference	Ref:30000-00022



INCUMIX

T. range (°C)	Amb.T. to 60
Speed range (rpm)	200 - 1200
Resolution	0,1°C / 100 rpm
Max. volume	2 l. x place
Reference	Ref:30000-00201



SHAKERS AND MIXERS - ROTATIVE AND ROLLING

Features

- Speed adjustable, controlled by microprocesador or Fix stirring speed.
- Digital display LCD backlighted showing the selected and actual speed and timer (with audible alarm)
- Membrane push-button control
- Automatic restart after unexpected shut down keeping the same parameters as before the incident. And incident sign appears on the display.
- Quiet operation, suitable for continuous running.

ROLLER MIX

RORATOY AND OSCILLATING MIXER WITH ROLLERS

Speed range (rpm)	20
Inclination angle	+/- 4°
Reference	Ref:10000-01009



ROLLER MIX D

DIGITAL RORATOY AND OSCILLATING MIXER WITH ROLLERS

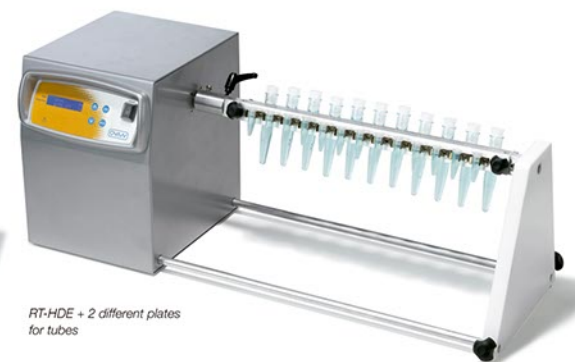
Speed range (rpm)	20 - 150
Inclination angle	+/- 4°
Resolution (rpm)	5 rpm / 5min
Timer (min)	0 - 120
Reference	Ref:10000-01071



ROTATOR HD

DIGITAL RORATOY MIXER

Speed range (rpm)	10 - 40
Resolution (rpm)	2
Timer (min)	0 - 120
References	



Drum 1 bottle Ref:10000-01075	Drum 6 bottles Ref: 10000-01078	Drum 12 bottles Ref:10000-01081
Drum 2 bottles Ref:10000-01076	Drum 8 bottles Ref:10000-01079	Rotational axis for fix clips Ref:10000-01082
Drum 4 bottles Ref:10000-01077	Drum 10 bottles Ref: 10000-01080	Drum 3 separating funnels Ref:10000-01083

Features

- Speed adjustable, controlled by microprocessor.
- Constant speed independently of the load.
- Smooth and progressive start and stop, independently of the selected speed.
- Digital display LCD backlit indicating the selected and actual speed and timer (with audible alarm).
- Membrane push-button control.
- Automatic restart after unexpected shut down, keeping the same parameters as before the incident. An incident sign appears on the display.
- Quiet operation. Suitable for continuous running.

ORBITAL MAXI

DIGITAL ORBITAL SHAKER

Max. load (kg)	25
Speed range (rpm)	30 - 220
Amplitude (mm)	30
Resolution (rpm)	5
Reference	Ref:10000-01071

Long-term, for continuous running Ref:1000-01051



ORBITAL MIDI

DIGITAL ORBITAL SHAKER

Max. load (kg)	10
Speed range (rpm)	50 - 400
Amplitude (mm)	10
Resolution (rpm)	5
Reference	Ref:10000-01024

OM10E + platform for erlenmeyers + erlenmeyer clips



ORBITAL MINI

DIGITAL ORBITAL SHAKER

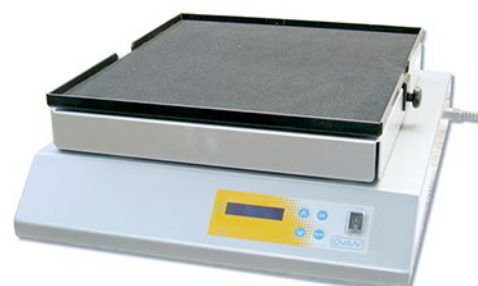
Max. load (kg)	5
Speed range (rpm)	50 - 500
Amplitude (mm)	10
Resolution (rpm)	5
Reference	Ref:10000-01010



ORBITAL MAXI - HUMIDITY

DIGITAL ORBITAL SHAKER

Max. load (kg)	25
Speed range (rpm)	45 - 250
Amplitude (mm)	30
Resolution (rpm)	5
Reference	Ref:30000-00089



SHAKERS AND MIXERS - HORIZONTAL

(Standard voltage 220V, request for different)

Features

- Speed adjustable, controlled by microprocessor.
- Constant speed independently of the load.
- Smooth and progressive start and stop, independently of the selected speed.
- Membrane push-button control.
- Quite operation. Suitable for continuous.
- Digital display LCD backlighted indicating the selected and actual speed and timer (with audible alarm).
- Automatic restart after unexpected shut down, keeping the same parameters as before the incident. An incident sign appears on the display.

HORIZONTAL MAXI

DIGITAL HORIZONTAL SHAKER

Max. load (kg)	10
Speed range (rpm)	30 - 200
Amplitude (mm)	30
Resolution (rpm)	5
Reference	Ref:10000-01012



HL10E + platform
for separating funnels

HORIZONTAL MINI

DIGITAL HORIZONTAL SHAKER

Max. load (kg)	5
Speed range (rpm)	50 - 500
Amplitude (mm)	10
Resolution (rpm)	5
Reference	Ref:10000-01034



HS10E

SHAKERS AND MIXERS - VIBRATION

(Standard voltage 220V, request for different)

Features

- Orbital shaker with vibration effect thanks to the small orbit.
- Speed adjustable, controlled by microprocessor.
- Digital display LCD backlighted indicating the selected and actual speed and timer (with audible alarm).
- Automatic restart after unexpected shut down keeping the same parameters as before the incident. And incident sign appears on the display.
- Constant speed independently of the load

VIBRAX

DIGITAL ORBITAL-VIBRATING SHAKER

Max. load (kg)	5
Speed range (rpm)	50 - 500
Amplitude (mm)	10
Resolution (rpm)	5
References	4 microtiter plates Ref:10000-01030 6 microtiter plates Ref:10000-01059



VX43E

KLINE

DIGITAL ORBITAL-VIBRATING SHAKER

Max. load (kg)	1
Speed range (rpm)	200 - 1000
Amplitude (mm)	3
Resolution (rpm)	20
Reference	Ref:10000-01053



K3E

VIBRAMIX

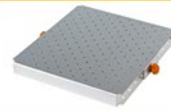
VORTICES MIXER

Speed range (rpm)	200 - 1000
Amplitude (mm)	3
Reference	Ref:10000-01006



ACCESSORIES FOR VIBRATION, HORIZONTAL AND ORBITAL SHAKERS (Standard voltage 220V, request for different)

Descripción	Reference	Comment
Universal platform mini	20000-00055	180x262 mm. With 4 rollers. For shake vessels, tube, erlenmeyers, flasks, racks.
Set of 2 fastening springs	20000-00043	To fix different vessels.
Universal platform	20000-00041	350x400 mm. With 5 rollers. To fix flask, vessels, bottles, grids of test tubes.
Double universal platform	20000-00131	350x400 mm. Same as the previous one, but with 2 shelves and 10 rollers.
Clips Platform	20000-00040	For fastening Erlenmeyer flasks clips.
Erlenmeyer flask clips	20000-00246 20000-00247 20000-00248 20000-00249 20000-00299	50 ml. - 30 units 100 ml. - 20 units 250 ml. - 12 units 500 ml. - 9 units 1000 ml. - 6 units
Non-slipping platform	20000-00084	350x400 mm. Suitable for Petri dishes, plates, small containers.
Double non-slipping platform	20000-00157	350x400 mm. Same as the previous one, but with 2 shelves.
Platform for separating funnels	20000-00044	For 5 separating funnels of 250 cc, 5 separating funnels of 500 cc or 3 separating funnels of 1,000 cc.
Platform for VibraMix	20000-00042	∅ 90 mm. For vessels or several tubes at the same time.
Header for VibraMix	20000-00083	∅ 60 mm. For 10 Eppendorf tubes ∅10x50 mm
Support shaft for tubes	20000-00086	Length: 60 mm.
Support rod	20000-00036	Includes 1 fastening wing nuts to fix it. 450 mm length.



SHAKERS AND MIXERS - ROCKING

(Standard voltage 220V, request for different)

Features

- Speed adjustable, controlled by microprocessor.
- Constant speed independently of the load.
- Smooth and progressive start and stop independently of the selected speed.
- Digital display LCD backlit indicating the selected and actual speed and timer (with audible alarm).
- Membrane push-button control.
- Automatic restart after unexpected shut down, keeping the same parameters as before the incident. An incident sign appears on the display.
- Non-slipping surface.
- Quiet operation. Suitable for continuous running.

SWING

DIGITAL ROCKING MIXER

Max. load (kg) 5

Speed range (rpm) 5 - 50

Angle of slope (mm) +/- 8°

Resolution (rpm) 1

Reference Ref:10000-01015



SW8E

SWING 3D

3D DIGITAL ROCKING MIXER

Max. load (kg) 5

Speed range (rpm) 5 - 50

Angle of slope (mm) +/- 8°

Resolution (rpm) 1

Reference Ref:10000-01028



SW8-3DE

Features

- For rotary agitation, for tubes from 6 to 35mm diameter.
- Allows placement and removal of the tubes without stop the instrument.
- Completely adjustable slope from 0° to 90°
- Security clutch allows stopping rotary motion.
- Ant scratching surface with chemical resistant coating.
- Suitable for continuous running.

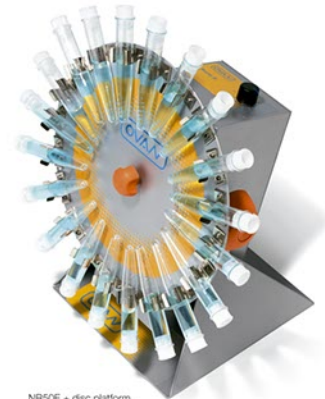
NORIA

ROTATORY MIXER

Speed range (rpm)	12
Angle of slope (mm)	0° - 90°
Voltage	100v, 110v or 220v / 50 or 60 Hz
Reference	Ref:10000-01013



N12E + disc platform with clamps for 25 Eppendorf tubes



NR50E + disc platform with clamps for 20 tubes

NORIA R

ROTATORY MIXER ADJUSTABLE

Speed range (rpm)	5 - 50
Angle of slope (mm)	0° - 90°
Voltage	100v, 110v or 220v / 50 or 60 Hz
Reference	Ref:10000-01062



NORIA R DIGITAL

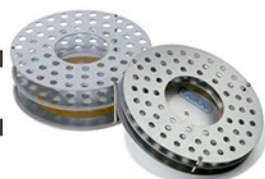
DIGITAL ROTATORY MIXER

Speed range (rpm)	10 - 100
Angle of slope (mm)	0° - 90°
Resolution (rpm)	2
Voltage	100v, 110v or 220v / 50 or 60 Hz
Reference	Ref:30000-00084

NORIA'S ACCESSORIES

Discs Platform with clamps & Racks

Reference	Description
20000-00093	25 tubes ø 6-7 mm
20000-00094	25 tubes ø 8-9 mm
20000-00095	25 tubes ø 10-11 mm
20000-00133	20 tubes ø 12-13 mm
20000-00134	20 tubes ø 14-15 mm
20000-00135	20 tubes ø 16-17 mm
20000-00136	19 tubes ø 18-19 mm
20000-00137	16 tubes ø 20-21 mm
20000-00138	14 tubes ø 22-23 mm
20000-00139	14 tubes ø 24-25 mm
20000-00140	14 tubes ø 27-30 mm
20000-00141	10 tubes ø 32-35 mm
20000-00051	60 culture tubes ø 12-13,5 mm
20000-00052	36 centrifuge tubes 15 ml ø 16-17,5 mm
20000-00053	20 centrifuge tubes 50 ml ø 29-31 mm
20000-00096	60 tubes Eppendorf from 0,5 to 2 ml



MAGNETIC STIRRERS' ACCESSORIES

Reference	Description
20000-00008	8 x 30 mm stirring magnet (pack 5)
20000-00026	18 assorted magnets
20000-00185	Contact thermometer 100°C
20000-00186	Contact thermometer 200°C
20000-00187	Contact thermometer 300°C
20000-00088	Cable for thermometer, connection DIN
20000-00036	Support rod (For contact thermometer and the external Pt100 sensor) 450 mm
20000-00034	External Pt100 sensor
20000-00073	Clamp for PT100
20000-00032	Kjeldhal adapters 250 cc. (only for 10000-00093)
20000-00033	Kjeldhal adapters 500 cc. (only for 10000-00093)
20000-00028	Stainless steel ring for protection



Features

- Speed adjustable, controlled by microprocessor.
- Constant speed independently that the conditions of the sample vary.
- Smooth and progressive start to maintain the magnetic coupling, independently of the selected speed.
- Membrane push-button control.
- Removable plate, to replace itself in case of deterioration.
- Digital display LCD backlighted indicating the selected and actual speed and temperature (except BASIC and MINI MAGMIX).
- Automatic restart after unexpected shut down, keeping the same parameters as before the incident. An incident sign appears on the display.

BASIC MAG MIX

MAGNETIC STIRRER WITH HEATING

Max. volume (l)	5 or 15
Speed range (rpm)	300 - 1500
T. range (°C)	37 - 400
Resolution (°C and rpm)	10 levels
Voltage	100v, 110v or 220v / 50 or 60 Hz
References	5L Ref:10000-00090 15L Ref:10000-00091



MICRO MAG MIX

DIGITAL MAGNETIC STIRRER WITH HEATING

Max. volume (l)	5 or 15
Speed range (rpm)	100 - 1250 200 - 1500
T. range (°C)	20 - 300
Resolution	0,5°C / 25 rpm
Voltage	100v, 110v or 220v / 50 or 60 Hz
References	5L Ref:10000-00092 15L Ref:10000-00093



MINI MAG MIX

MAGNETIC STIRRER WITH HEATING

Max. volume (l)	2
Speed range (rpm)	300 - 1250
T. range (°C)	100 - 400
Resolution (°C and rpm)	4 levels
Voltage	100v, 110v or 220v / 50 or 60 Hz
Reference	Ref:10000-01033



MULTI MIX HEAT

MULTIPLACE MAGNETIC STIRRER WITH HEATING

N° places	3 (5l/place)
Speed range (rpm)	300 - 1500
T. range (°C)	37 - 400
Resolution (°C and rpm)	10 levels
Voltage	100v, 110v or 220v / 50 or 60 Hz
Reference	Ref:10000-01022



MULTI MIX HEAT D

MULTIPLACE DIGITAL MAGNETIC STIRRER WITH HEATING

N° places	3 places	5 or 9 places
Speed range (rpm)	100 - 1250	200 - 1200
T. range (°C)	20 - 300	30 - 400
Resolution	0,5°C - 25rpm	10°C - 100rpm
Voltage	100v, 110v or 220v / 50 or 60 Hz	
References	3 places Ref:10000-01050 5 places Ref:10000-01037 9 places Ref:10000-01032	



Features

- Stirrer speed adjustable, controlled by microprocessor.
- Constant speed independently that the conditions of the sample vary.
- Smooth and progressive start to maintain the magnetic coupling, independently of the selected speed.
- Membrane push-button control.
- Ant scratch surface.
- Digital display LCD backlighted indicating the selected and actual speed and timer. With audible alarm (except MINI MIX).
- Automatic restart after unexpected shut down keeping the same parameters as before the incident. An incident sign appears on the display.

MICRO MIX ULTRA

DIGITAL MAGNETIC STIRRER WITHOUT HEATING

Max. volume (l)	50
Speed range (rpm)	50 - 500
Timer (min)	0 - 120
Resolution	5 rpm / 5 min
Voltage	100v, 110v or 220v / 50 or 60 Hz
Reference	Ref:10000-01052



MC50UE

MICRO MIX

DIGITAL MAGNETIC STIRRER WITHOUT HEATING

Max. volume (l)	8 or 20
Speed range (rpm)	200 - 1500
Timer (min)	0 - 120
Resolution	20 rpm / 5 min
Voltage	100v, 110v or 220v / 50 or 60 Hz
References	8L Ref:10000-00094 20L Ref:10000-00095



MC08E

TWIN MIX

DIGITAL MAGNETIC STIRRER WITHOUT HEATING

Max. volume (l)	8 or 20
Speed range (rpm)	200 - 1500
Inverter timer	from 1 second
Resolution (rpm)	20
Voltage	100v, 110v or 220v / 50 or 60 Hz
Reference	Ref:30000-00154



MC08E

MINI MIX

DIGITAL MAGNETIC STIRRER WITHOUT HEATING

Max. volume (l)	2
Speed range (rpm)	300 - 1250
Timer (min)	0 - 120
Resolution (rpm)	4 levels
Voltage	100v, 110v or 220v / 50 or 60 Hz
Reference	Ref:10000-01036



MN02E



MM30E

MULTI MIX D

MULTIPLACE DIGITAL MAGNETIC STIRRER WITHOUT HEATING

N° places	3 places	5 or 9 places
Speed range (rpm)	200 - 1500	200 - 1200
Resolution (rpm)	20	100
Voltage	100v, 110v or 220v / 50 or 60 Hz	
References	3 places Ref:10000-01046 5 places Ref:10000-01038 9 places Ref:10000-01039	



MM50E



MM90E

Features

- Temperature controlled by microprocessor, by means of an integrated Pt100 sensor.
- ARA V2 algorithm for high precision temperature control with external sensor, without surpassing reference temperature (even 30°C).
- Digital display LCD backlighted indicating the selected and actual temperature, and timer (with audible alarm).

MICRO HEAT ULTRA

DIGITAL HOT PLATE

T. range (°C)	20 - 400
Timer (min)	0 - 120
Resolution (°C)	0,5
Voltage	100v, 110v or 220v / 50 or 60 Hz
References	20x40cm Ref:10000-01073 32x32cm Ref:10000-01042



MCH400-RE



MCH400-SE

MICRO HEAT

DIGITAL HOT PLATE

T. range (°C)	20 - 300
Timer (min)	0 - 120
Resolution	0,5 °C / 5 min
Voltage	100v, 110v or 220v / 50 or 60 Hz
Reference	Ref:10000-00096



MCH300E

MINI HEAT

HOT PLATE

T. range (°C)	100 - 400
Resolution (°C)	4 levels
Voltage	100v, 110v or 220v / 50 or 60 Hz
Reference	Ref:10000-01040



MH400E

MULTI HEAT D

DIGITAL HOT PLATE

N° places	3, 5 or 9 places
T. range (°C)	20 - 300 30 - 400
Resolution (°C)	0,5 or 10
Voltage	100v, 110v or 220v / 50 or 60 Hz
References	3 places Ref:10000-01047 5 places Ref:10000-01043 9 places Ref:10000-01044



MH30E



MH50E



MH90E

TELE MICRO HEAT ULTRA

DIGITAL HOT PLATE

T. range (°C)	20 - 400
Timer (min)	0 - 120
Resolution	0,5°C / 5 min
Voltage	100v, 110v or 220v / 50 or 60 Hz
Reference	Ref:30000-00145

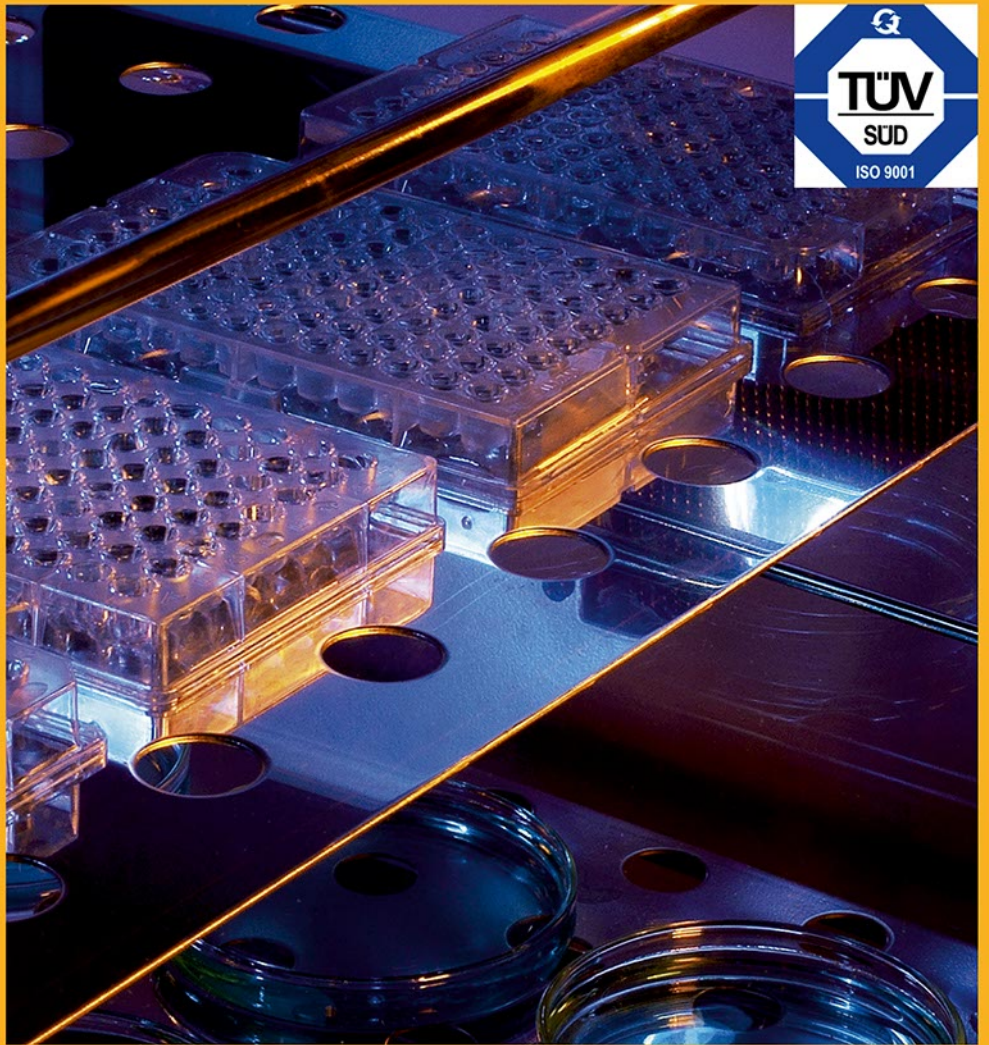
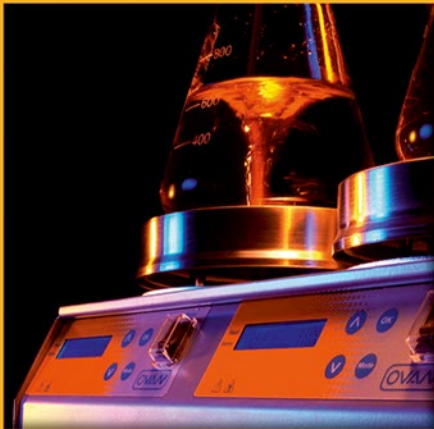




Suministros Grupo Esper, S.L.
P.I. Bonavista
C/ Pintor Roig i Soler, 14
08916 Badalona
SPAIN

Phone: +34 93 465 70 02
Web: www.ovan.es

E-mail address:
info@ovan.es
export@ovan.es



Available Design Department for your
specific requests

